

> Makin Moves	01
> From liability to asset	01
> New Library brings access for all	02
> Stylish luxury for London home	02
> Salford says yes to planning	03
> Des Res in Didsbury	03
> Affordable living in Crumpsall	03
> Breathing new life into Piccadilly	04
> Makin the grade	04
> Makin it happen for Comic Relief	04
> CPD lectures	04

makin news

October 2007

makin moves... New larger offices for makinarchitecture

Just ten months ago we were makinchanges and introducing our new makinarchitecture logo and now we have been makinmoves to a bright new office on the 3rd Floor of Amazon House, Brazil Street.

As a successful growing business our London Road office was becoming a bit of a tight squeeze. Extra space was needed for more workstations and meeting areas, so after quite an extensive search, we were fortunate to find our new larger home. Overlooking Canal Street in the heart of the vibrant village area, Amazon House is conveniently located

between the Oxford Road and Piccadilly Railway Stations making it easy for our green conscious staff to commute.

Chairman Ray Makin said..."the move is an important step forward for our business; we have seen a marked improvement in new and repeat business

since our re-launch and we are expecting further steady growth over the next few years. The new office gives us room to expand, provides improved meeting facilities and is a great place for the **makinarchitecture** team to work - in fact we are already finding we are interacting more and are happier in the new open plan surroundings".



Left: Amazon House, Brazil Street, interior and exterior.

See back cover or visit our website for a location map: www.makinarchitecture.com

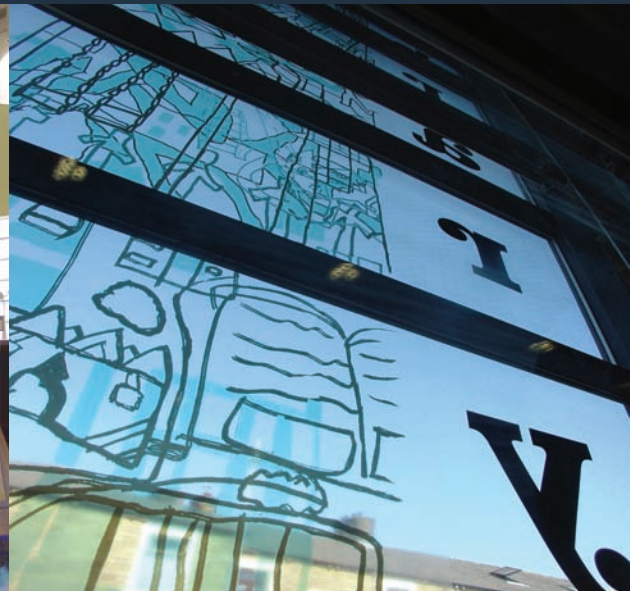
Liability land to be transformed into asset

Left to deteriorate for many years this section of open space in Kingston-Upon-Hull had become a problem as nature reclaimed what were once railway lines, railway sidings, recreation areas and areas of industry.

makinarchitecture was commissioned to conduct an in-depth study and the resulting master plan proposals will now turn this liability into a potential asset for the community. Current usage of the land and the needs of the people, were taken into account as well as ways to achieve the necessary funding.

Once completed the redevelopment will regenerate the Springhead Park area, bringing benefits to the surrounding district with improved facilities and services in line with the needs of a wider populace, at the same time as giving the local economy a much needed boost.





New Library brings access for all

Eagerly awaited, the opening ceremony was officiated by the Mayor of Bolton, Councillor Barbara Ronson and attended by local residents who are rightly proud of the new library at Daubhill, Bolton.

An inaccessible and under utilized Victorian building has now been replaced and with access for all at street level. It isn't just a place to lend books, glass walling connects the outside to in and invites the passer-by to come and mingle amongst the book displays, drop in for a coffee and make full use of the versatile spaces, in short, this really will be a focal point for the community.

makinarchitecture's managing director Andrew Burns says... "This is a building for the people, so it was important to involve the community in the Library's design; perhaps one of the nicest examples of this, is a series of artwork panels developed by local children. The artwork gives unique character to the front elevation and identifies the library with the community".



Out with the old and in with the new... The Mayor, Councillor Barbara Ronson unveiled the original Victorian cornerstone which has been carefully preserved. Pictured right, she cuts a special cake watched on by her consort Councillor Bob Ronson and Councillor Ismail Y Ibrahim.

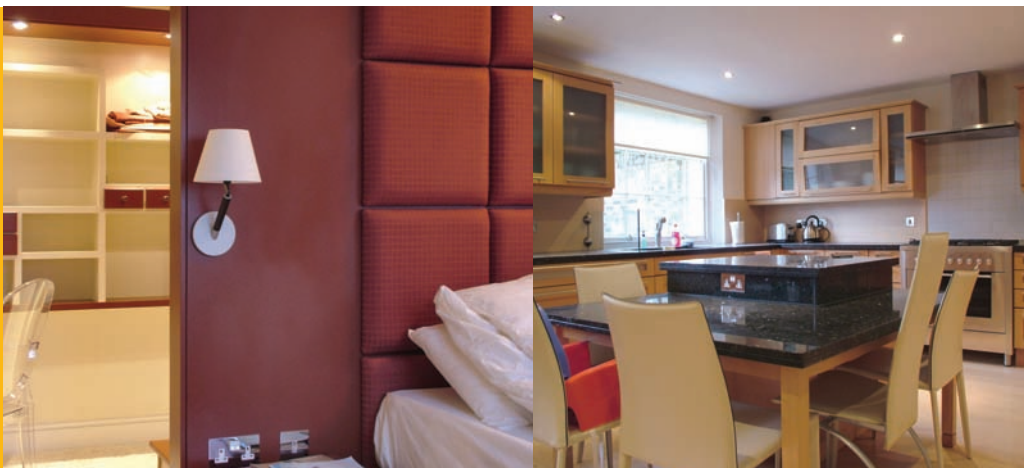


Stylish luxury for London home

Our client bought this once fine, but neglected, four storey Georgian Town House in London for his family home and following essential repairs and restoration to the external fabric, our brief was to design and fully fit-out the interior in a modern style to compliment the existing building.

Our proposals were incorporated into 3D images for the client prior to commissioning bespoke fitted furniture, soft furnishings and lighting throughout.

Working within the existing structure and retaining original features, new spaces were created to cater for modern life with open family areas as well as quiet areas for study and work. Finishing touches, such as a whole house sound system with concealed speakers, the formation of a dressing area in the master bedroom, and a vanity area within the master en-suite add to the air of sophisticated luxury.



makinarchitecture recently secured planning permission for a total of 8 spacious 3-bedroom apartments, which are designed with real family life in mind.

Design Director Ashley Hunt says... "Previously the site had been granted permission for 6 apartments but this was no longer a viable option for our client, so we increased the number of apartments on the scheme in practically the same footprint, yet by coming up with design solutions to address previous issues, none of the adjacent dwellings will be overlooked".

makinarchitecture's contemporary design ensures that all principle habitable rooms face either the street or the rear of the plot. Any bedrooms or bathrooms, which would look into the rear of adjoining plots, are obscured, whilst side elevation rooms feature nooks with views only to front and back. This also applies to balcony edges which feature obscured glazing to the sides.

Salford says yes to planning

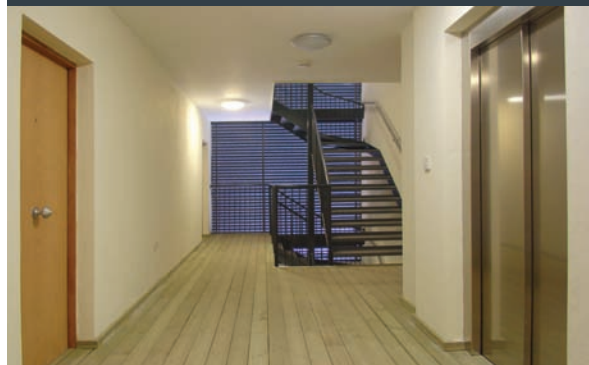


Above: Moorfield Street, West Didsbury, rear/side elevation.

Creating affordable living in Crumpsall

Located in the heart of the city's newest Conservation Area, the site, vacant since the end of the war, had formerly been occupied by a pair of semi-detached houses. Our design needed to respect the heights and rhythm of the surrounding Victorian buildings, so a simple, contemporary and uncluttered building built around a hidden central atrium was chosen. The new building houses twelve flats, above basement car parking and provides much needed, affordable, modern accommodation for the Crumpsall community.

Our design takes the close proximity of the adjoining dwellings into consideration and splayed windows feature on the sidewalls to address the issue of privacy. Again with discretion in mind, the hidden atrium is louvered to both sides thereby screening the views to party properties, yet natural light and a feeling of outdoor space is maintained along with an open aspect for fire safety purposes.



Des Res in Didsbury

When **makinarchitecture** were commissioned by a local developer to convert and extend this existing detached Edwardian property in the leafy suburbs of West Didsbury we were delighted to take on the challenge.

Taking care to minimize the impact on the street scene, we designed a contemporary addition to the rear of the building which is visually separated from the existing by a full height glazed screen. This projects at ground floor to accommodate an airy communal entrance.

Bold white render and the warm tones of cedar cladding also provide a contrast with the existing traditional brick. At the rear, large south facing balconies are designed to take advantage of the sunny aspect whilst diminishing the mass of the extended building.

The resulting six luxury apartments each have a distinctive character and the development has proved to be very popular with the stylish residents of West Didsbury.





From 16/07/07 our new address details are:

3RD FLOOR AMAZON HOUSE BRAZIL STREET MANCHESTER M1 3PJ
TELEPHONE 0161 236 0051 FACSIMILE 0161 228 3442
www.makinarchitecture.com architect@makinarchitecture.com

(our phone, fax, web & email details remain the same)

Printed on recycled paper.



Breathing new life into Piccadilly

Piccadilly has emerged as one of the latest desirable addresses for discerning city dwellers, with two show apartments at number 79 now open for viewing and attracting great interest.

One of a number of these grand old buildings within the Piccadilly area **makinarchitecture** are working on, 79 Piccadilly, was originally offices and warehousing but had fallen into disrepair.

The grade II listed building has now been sensitively restored and brought back to life with 25 spacious new apartments combining stunning contemporary design and splendid original architectural features.

Makin it happen for Comic Relief



It's not often you get to have a second chance in life, so when the winner of our prize draw at our re-launch found she couldn't go to Florida as planned, we decided to offer the prize to you all again and at the same time take the opportunity to raise lots of money for Comic relief.



With all entries and donations received, the grand draw for the holiday in Florida took place at noon on 28th March and the winner Debbie Illsley a Partner at Nexus Solicitors in Manchester was delighted to find out she had won. Congratulations to Debbie and commiseration's to everyone else, but our heartfelt thanks go to all of you who took part in the draw, we were delighted that your contributions raised a whopping £500 for Comic relief. Well done!

Debbie wins a two-week holiday for two people, including return flights in this luxury villa in Kissimmee Florida. For those of you who were disappointed not to win, don't despair the luxury Florida Villa is available for holiday lets, so why not check it out at www.floridakissimseehomes.com

Book now for CPD lectures

A new round of free in-house CPD lectures will be starting in the Autumn, so now is the time to secure a booking for your company.

Ray Makin says...*"The **makinarchitecture** seminar is aimed at property industry professions who don't have to know the ins and outs of PPG15 but would benefit from an inspired look at what you can and cannot do with listed buildings or buildings in conservation areas. It's particularly useful for developers and agents who advise developers, so that misunderstandings can be avoided. It's amazing, once you learn how to play by the rules, a building that would have been overlooked for development can be recognised as a commercially viable option"*.

Book your free in-house seminar and we will show you how to play by the rules, ways to get it right first time and ways to get your plans approved.

Contact Tracey Beekman
tracey@makinarchitecture.com

makin the grade

It's taken nearly 8 years but phew... Heloise Wood has done it... that is she has achieved her Advanced Diploma in Professional Practice in Architecture and is now registered by ARB as an Architect.

Heloise started her studies in 1999 with three years at university followed by one year out in practice and then another two years back at university, she joined makinarchitecture two years ago for the final phase of study and achieved the coveted ADPPA from the RIBA in April this year. Well done Heloise!

Heloise now has a double celebration as she and her boyfriend got engaged whilst on a recent trip to abroad, Congratulations.

